

11

E₅ D₅ B D₅ F

11
11
11

ARNBERG

11
11
11

11
11
11

11
11
11

\circ \circ \circ \circ \circ \circ \circ \circ \circ \circ
 \circ \circ \circ \circ \circ \circ \circ \circ \circ \circ
 \circ \circ \circ \circ \circ \circ \circ \circ \circ \circ

A^b $C -$ F ~~E~~ E^b D D^b
 \rightarrow q ~~(E^b)~~

A^b F G E^b

\circ \circ \circ \circ \circ \circ \circ \circ \circ \circ
 \circ \circ \circ \circ \circ \circ \circ \circ \circ \circ
 \circ \circ \circ \circ \circ \circ \circ \circ \circ \circ

$G - / D$ $F -$ D^b
 $F -$ $A -$ $C^{\#} -$ C

A 5 F E

A - 5 A

A E B

A

A E A C⁺ B

give that

to the

A/B E

14.6 14.6

A

| A

| E

| B
no . . .

$C^{\#} - E^{\flat} / A^{\flat}$
| B^b -

F
D^b

K

←

~~B~~ F[#] -

~~Handwritten scribble~~

A G A[#]
A

~~A[#]~~
| C

~~A[#] B^b B^b B^b~~

~~B^b A[#] B~~

| G G G

A 7

E 7

A / B

| C[#] - B

A / B

E

||

| C[#] - B

E

|

|

|

A^b -

| B^b ~~B^b~~

F[#] / A^b

B

E / D

C[#] -

F[#] 7

F

C[#] -

D sus D⁷ E^b 6⁹

B^b 6⁶ 6⁹ / C

F -

A^b

B^b 6⁶

F[#] E^b -

B B^b - C[#] D⁷ E D⁷

B^b

C- D^b E^b/A A^b F- E^b Dalt

E^b C^b C AG B^b / A^b A^b / F^b C/E F-

E^b / A^b A^b / D^b A^b D^b E^b D^b

B^b / E^b E^b / F salt C- F^b

E^b E^b A

F- E^b / F B^b E^b A^b / C^b C^b

F- ^b C^b C^b C^b

$\frac{B}{A} - \frac{A}{B} - \frac{A}{C} - \frac{A}{B} - \frac{A}{C} - \frac{A}{B} - \frac{A}{C}$
 $\frac{B}{A} - \frac{A}{B} - \frac{A}{C} - \frac{A}{B} - \frac{A}{C} - \frac{A}{B} - \frac{A}{C}$

$\frac{B}{A} - \frac{A}{B} - \frac{A}{C} - \frac{A}{B} - \frac{A}{C} - \frac{A}{B} - \frac{A}{C} - \frac{A}{B} - \frac{A}{C}$

$\frac{B}{A} - \frac{A}{B} - \frac{A}{C} - \frac{A}{B} - \frac{A}{C} - \frac{A}{B} - \frac{A}{C} - \frac{A}{B} - \frac{A}{C}$

$\frac{B}{A} - \frac{A}{B} - \frac{A}{C} - \frac{A}{B} - \frac{A}{C} - \frac{A}{B} - \frac{A}{C} - \frac{A}{B} - \frac{A}{C}$

$\frac{B}{A} - \frac{A}{B} - \frac{A}{C} - \frac{A}{B} - \frac{A}{C} - \frac{A}{B} - \frac{A}{C} - \frac{A}{B} - \frac{A}{C}$

$\frac{B}{A} - \frac{A}{B} - \frac{A}{C} - \frac{A}{B} - \frac{A}{C} - \frac{A}{B} - \frac{A}{C} - \frac{A}{B} - \frac{A}{C}$

60	60	60	60
60	60	60	60
60	60	60	60
60	60	60	60

60 60 60 60 60

B/G F/B

B- E- C- F B A

St

$$B - A - F \in E \in D$$

$$A \in E \in C$$

$$B^s \quad C - \quad E^s \quad B \quad C^s \quad A^s$$

$$F -$$

$$B^s - E^s \quad D \quad A/E \quad B^s / F \quad B^s \quad A - \quad C - b$$

$$A \in C \quad D$$

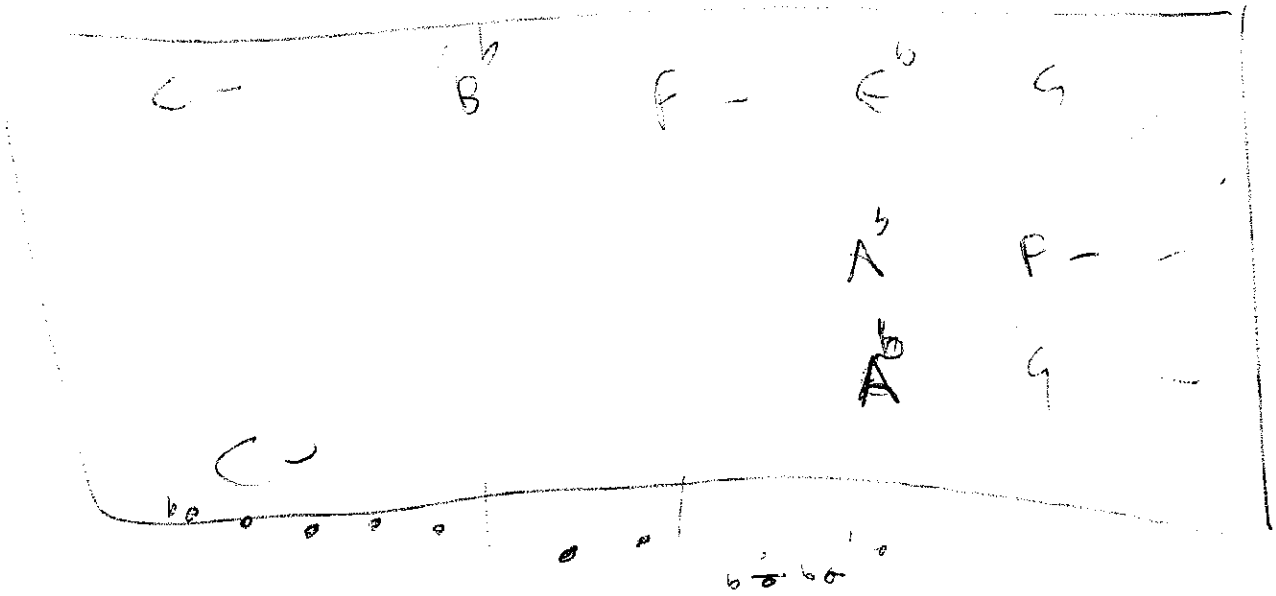
$$B^s - \quad E^s \quad D^s \quad C \quad D \quad F^s$$

$$B^s - \quad E^s \quad A^s \quad C^s \quad D^s \quad D -$$

$$D^s \quad A^s \quad E - / F \quad D - / E^s$$

$$A - B - C - A - D$$

$$F \quad A^s$$



b^b b^b b^b

$C-$

C- B^b- D^b7 E^b7

E^b C- D^b

F^b B E A

C-

C^b

B^b-

D^b

A^b-

B

B^b-

D^b

A^b-

B

E

C-

D^b

F^b
to

B o

E-

A

BA

7

1 E C⁴

1 (B)

1 G
1
C
1

G A- B C
G A- CB-A-

6 7: 11

3/9/96

(9)

Case 4 B-⁶⁶ A- C B D e E

G B C B D C E D

o o o o o o o o

G A- B- D- C B-4 E- D C

D/f⁴ A- / G E/C¹⁴ A- ~~F~~/ D D ~~E~~ ~~C~~

A- G F | E | A | D SJS

F⁴ SJS- E S³

o o -172 F o o

G- D E^b B^b (A

2
0
0
0

6

0

C-¹ G-⁰

F G- F C F¹

D/G C/F Balt B^b/C^b C-^{b6}

6

no 0

obo

0

0

bo

7

0

no

no

no

hobno

0

no

0

bo

0

|

0

0
0

0
0

0
0

0
bo

0
bo
bo

(bo
bo
bo)

9-

$B^{\frac{1}{2}}/c$

$F/B^{\frac{1}{2}}$

$E\pi/f$

$A^{\frac{1}{2}}A$

$E^{\frac{1}{2}}$

O

$O^{\frac{1}{2}}$

$B^{\frac{1}{2}} -$

C- A^h 9 PM

C- A C^h-

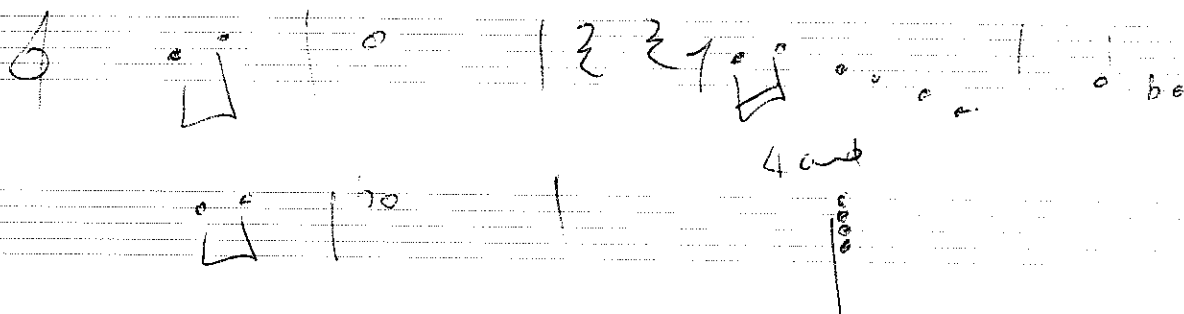
B- E/C^h A

C D 7 B- / A

90 FD^h

ED E^h D

groove head



6
0
0
0
0
0

40
0
0
0
0

A- 0 0 0 0 0

C- 8

A^b

G-

(F)

A

C[#]

B

4

E/G

A

CA7

B/A (A-)

40

F[#]

E^bΔ

E^bΔ7

F G- B^h

F G- C- E^h

F B^h ~~DE~~ D-1C

F ~~AB~~ G- E^h B^h D F

A^h C- E^h A^h E^h G/F

A^h G B^h F E^h D^h A^h D7

D C G

60 200
60

[illegible]

$b - \bar{0} \quad 6 \quad 9 \quad 0 \quad 4 \quad 0 \quad 8 \quad 0 \quad 2 \quad b$

Handwritten notes on lined paper:

h a e b o

b o . o b s o

6

b- b b b b

[Handwritten notes:]

b
a
h
e
o
b
a

[illegible]

F A- G F

$\frac{L}{E} \quad F \quad D \left(\frac{F}{E} \right)^4 \quad G$

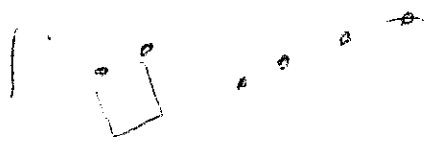
D/F^k $F+11$

Handwritten musical notation on a five-line staff. It begins with a treble clef and a key signature of one flat (B-flat). The notation includes several notes, some with accidentals, and a double bar line. There are also some handwritten markings above the staff, possibly indicating phrasing or dynamics.

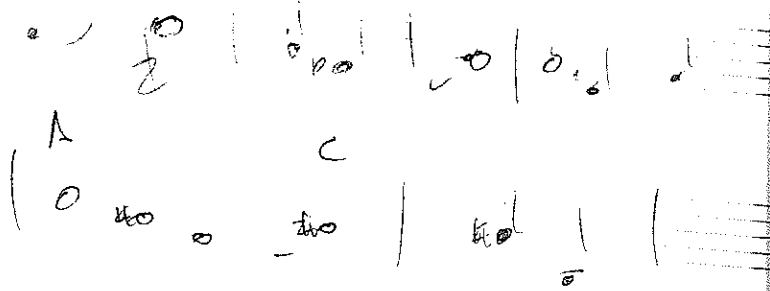
Handwritten musical notation on a five-line staff. It features a treble clef and a key signature of one flat. Below the staff, there are four distinct handwritten symbols or chords: AA^7 , EA^7 , BA^7 , and f^7 . These are separated by vertical lines, suggesting a sequence of chords or a harmonic progression.

Handwritten musical notation on a five-line staff. It starts with a treble clef and a key signature of one flat. The notation includes a few notes and a double bar line. There are also some handwritten markings above the staff, possibly indicating phrasing or dynamics.

Handwritten musical notation on a five-line staff. It features a treble clef and a key signature of one flat. The notation includes several notes and a double bar line. There are also some handwritten markings above the staff, possibly indicating phrasing or dynamics.

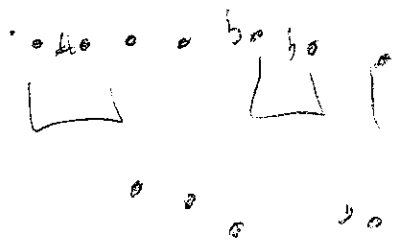
1. 

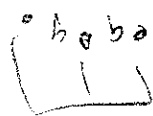




40 0 0 40 0







40 0

60 0 0 60 0 0

60 0 0 60 0 0

60 0 0 60 0 0

60 0 0 60 0 0

60 0 0 60 0 0

C/L G⁺ D D⁺ E

in boxes

F⁺/B E⁺/A⁺ ~~B⁺/A⁺~~ D⁺/A⁺

D⁺/C C/F

b₀ b₀ #₀ 0 8 0 00 0

b₀ b₀ 0 40 40 0 0 0

0₀ 60₀ 48 0

00 40₀ 00₀

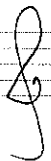
0

00

C/G

G/D

DA7



G/D

DD7



F^b/B

E^b/A^b

D^b

/C

F

#0

to

to



E^b

C

D

C[#]

C



to



What do you feel?

E^s / A^L D^b / C^b D^- / B^b

B^b / C A^- / D^b

o o o o l o

o o b o b o

o o 4 o
o o

o b o 4 o b o o

o o o b o 4 o o

o

b

b o

b o

o

b o o

4 o

b o b o
b o

7

o

o

o

o

b

b o o

b o b o

o o

b o o

b o b o
o o

7

o

o

o

o

b o

4 o b o
o o b o

b o

60
60
0

40
40
0

000
00

40
40

40
40

40

f47 97

0
0
0

0

0

0
0

0

0

0

40

0

0

0

0

0

C →

A-

F

9A7

A-/D

E-/F

AD

F⁺

C⁺

~~AD~~ ~~AD~~

A/B

CA7

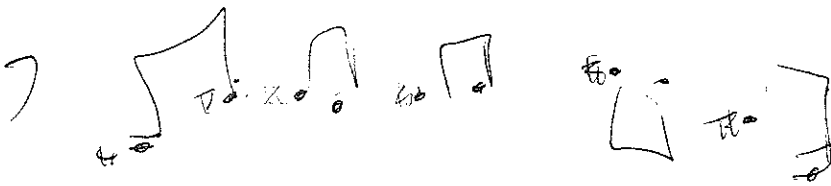
B-/A

F/A B-/A

$$\text{A}^4 \quad C \quad E - 9 \quad \frac{D^h}{E^s} \quad B^{\downarrow} -$$

C- FD7 B^L - E^S

DD7 F_{-11}^{\pm} ED7 D17 \mathbb{Q} AD7


$$\in \text{alt } B \quad 0/B^3$$

6. 10. 10. 10. 10.

E A B N

slow blues C

fast

body

aint misbehaven

all of you

A^b
E^b

F-

C A- E^b B^b D-

F

A- F[#] A^b

C A^b Dsus B/D[#]

E B